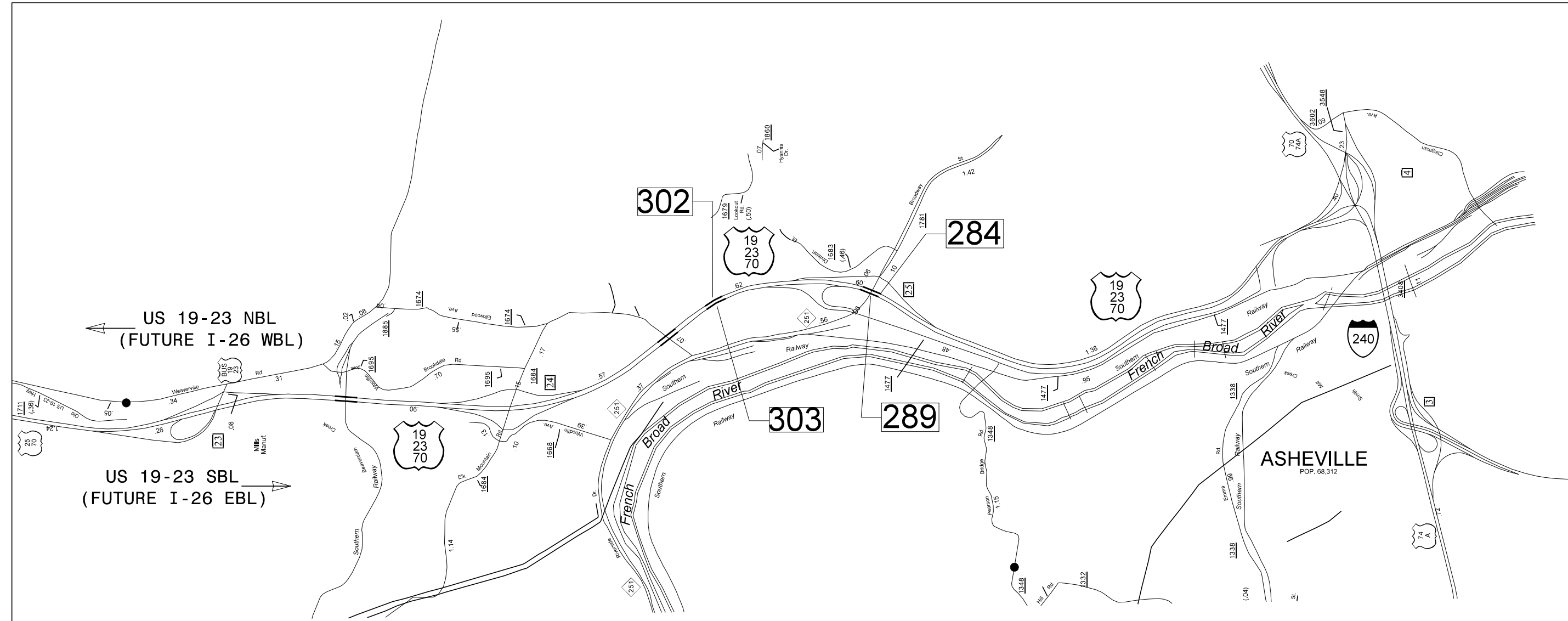


STATE OF NORTH CAROLINA
DIVISION OF HIGHWAYS

TRANSPORTATION MANAGEMENT PLAN

BUNCOMBE COUNTY



LOCATION: BRIDGE #100284 ON US 19/23 OVER SR 1781 (BROADWAY ST.)
 BRIDGE #100289 ON US 19/23 OVER SR 1781 (BROADWAY ST.)
 BRIDGE #100302 ON US 19/23/70 OVER SR 1679 (LOOKOUT RD.)
 BRIDGE #100303 ON US 19/23/70 OVER SR 1679 (LOOKOUT RD.)

TYPE OF WORK: BRIDGE PRESERVATION -LATEX MODIFIED CONCRETE-
 EARLY STRENGTH (LMC-VES) OVERLAY, AND JOINT REPAIR.

INDEX OF SHEETS

SHEET NO.	TITLE
TMP-1	TITLE SHEET, VICINITY MAP, AND INDEX OF SHEETS
TMP-1A	LIST OF APPLICABLE ROADWAY STANDARD DRAWINGS, AND LEGEND
TMP-1B	TRANSPORTATION OPERATIONS PLAN: (MANAGEMENT STRATEGIES, GENERAL NOTES, AND LOCAL NOTES)
TMP-2	TEMPORARY TRAFFIC CONTROL NARRATIVE
TMP-3	BRIDGE CROSS SECTIONS
TMP-4	BRIDGE 289 ON-LOOP OFFSITE DETOUR

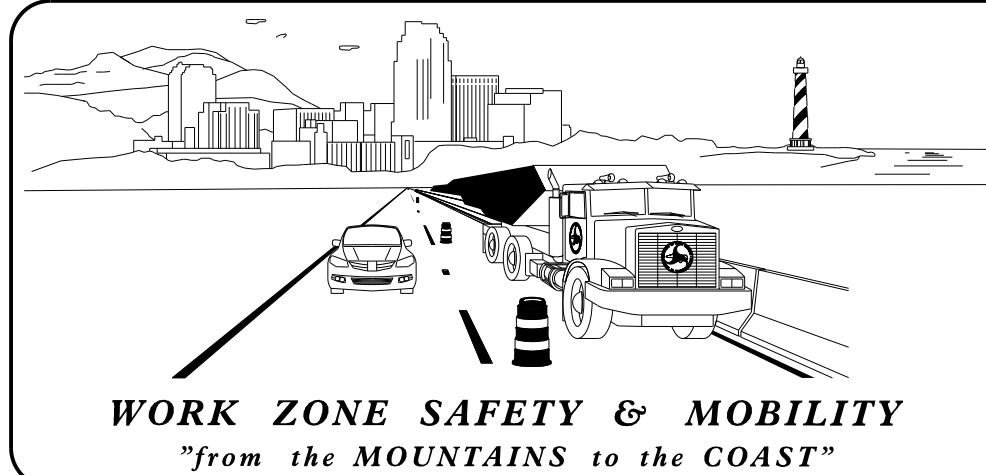
SHEET NO.

TMP-1

13BPR.3.3

TIP PROJECT:

6/17/2021
 \\dot\dfsroot\Groups-WZTCCC\TMU\WZTC\DesignGroup3\Projects\13BPR.3.3\13BPR.3.3.TC.TMP_01.dgn
 User: macklilu



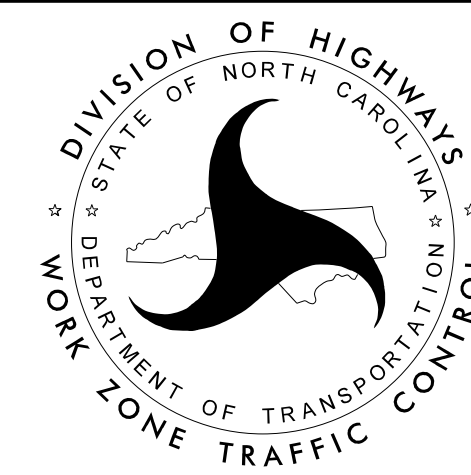
PLANS PREPARED BY:

M. AKLILU

NCDOT CONTACTS:

DON PARKER, P.E.
PROJECT ENGINEER

KARMEN DAIS, P.E.
PROJECT DESIGN ENGINEER



DOCUMENT NOT CONSIDERED FINAL
UNLESS ALL SIGNATURES COMPLETED

APPROVED: Don A. Parker
40048282818410

DATE: 6/17/2021

SEAL



ROADWAY STANDARD DRAWINGS

THE FOLLOWING ROADWAY STANDARDS AS SHOWN IN "ROADWAY STANDARD DRAWINGS" - N.C. DEPARTMENT OF TRANSPORTATION - RALEIGH, N.C., DATED JANUARY 2018 ARE APPLICABLE TO THIS PROJECT AND BY REFERENCE HEREBY ARE CONSIDERED A PART OF THESE PLANS:

STD. NO.	TITLE
1101.01	WORK ZONE WARNING SIGNS
1101.02	TEMPORARY LANE CLOSURES
1101.03	TEMPORARY ROAD CLOSURES
1101.04	TEMPORARY SHOULDER CLOSURES
1101.05	WORK ZONE VEHICLE ACCESSES
1101.06	WARNING SIGNS FOR BLASTING ZONES
1101.11	TRAFFIC CONTROL DESIGN TABLES
1110.01	STATIONARY WORK ZONE SIGNS
1110.02	PORTABLE WORK ZONE SIGNS
1115.01	FLASHING ARROW BOARDS
1130.01	DRUMS
1135.01	CONES
1145.01	BARRICADES
1150.01	FLAGGING DEVICES
1160.01	TEMPORARY CRASH CUSHION
1165.01	TRUCK MOUNTED ATTENUATOR
1170.01	PORTABLE CONCRETE BARRIER
1180.01	SKINNY - DRUMS
1205.01	PAVEMENT MARKINGS - LINE TYPES AND OFFSETS
1205.02	PAVEMENT MARKINGS - TWO LANE AND MULTILANE ROADWAYS
1205.03	PAVEMENT MARKINGS - EXITS AND ENTRANCE RAMP
1205.04	PAVEMENT MARKINGS - INTERSECTIONS
1205.05	PAVEMENT MARKINGS - TURN LANES
1205.06	PAVEMENT MARKINGS - LANE DROPS
1205.07	PAVEMENT MARKINGS - PEDESTRIAN CROSSWALKS
1205.08	PAVEMENT MARKINGS - SYMBOLS AND WORD MESSAGES
1205.09	PAVEMENT MARKINGS - PAINTED ISLANDS
1205.10	PAVEMENT MARKINGS - SCHOOL AREAS
1205.11	PAVEMENT MARKINGS - RAILROAD CROSSINGS
1205.12	PAVEMENT MARKINGS - BRIDGES
1205.13	PAVEMENT MARKINGS - LANE REDUCTIONS
1205.14	PAVEMENT MARKINGS - ROUNDABOUTS
1205.15	PAVEMENT MARKINGS - SUPERSTREETS
1250.01	RAISED PAVEMENT MARKERS - INSTALLATION SPACING
1251.01	RAISED PAVEMENT MARKERS - (PERMANENT AND TEMPORARY)
1261.01	GUARDRAIL AND BARRIER DELINEATORS - INSTALLATION SPACING
1261.02	GUARDRAIL AND BARRIER DELINEATORS - TYPES AND MOUNTING
1262.01	GUARDRAIL END DELINEATION
1264.01	OBJECT MARKERS - TYPES
1264.02	OBJECT MARKERS - INSTALLATION

LEGEND

GENERAL

- DIRECTION OF TRAFFIC FLOW
- DIRECTION OF PEDESTRIAN TRAFFIC FLOW
- EXIST. PVMT.
- NORTH ARROW
- PROPOSED PVMT.
- TEMP. SHORING (LOCATION PURPOSES ONLY)

WORK AREA

REMOVAL

SIGNALS

- EXISTING
- PROPOSED
- TEMPORARY
- PORTABLE

PAVEMENT MARKINGS

- EXISTING LINES
- TEMPORARY LINES

TRAFFIC CONTROL DEVICES

- BARRICADE (TYPE III)
- CONE
- DRUM
- SKINNY DRUM
- TUBULAR MARKER
- TEMPORARY CRASH CUSHION
- FLASHING ARROW BOARD
- FLAGGER
- LAW ENFORCEMENT
- TRUCK MOUNTED ATTENUATOR (TMA)
- CHANGEABLE MESSAGE SIGN

TEMPORARY SIGNING

- PORTABLE SIGN
- STATIONARY SIGN
- STATIONARY OR PORTABLE SIGN

PAVEMENT MARKERS

- CRYSTAL/CRYSTAL
- CRYSTAL/RED
- YELLOW/YELLOW

PAVEMENT MARKING SYMBOLS

- PAVEMENT MARKING SYMBOLS

6/17/2021 \\dot\dfsroot\Groups-WZTCCC\TMU\WZTC\DesignGroup3\Projects\3BPR.3.3\3BPR.3.3_TC_TMP_01A.dgn User:smackillu

APPROVED: DATE: 6/17/2021			<h3>ROADWAY STANDARD DRAWINGS & LEGEND</h3>
DOCUMENT NOT CONSIDERED FINAL UNLESS ALL SIGNATURES COMPLETED			

MANAGEMENT STRATEGIES

THE FOLLOWING LISTED WORK ZONE STRATEGIES ARE RECOMMENDED FOR INCLUSION WITHIN THIS TRANSPORTATION MANAGEMENT PLAN (TMP).

RECOMMENDED STRATEGIES:

TRAFFIC MANAGEMENT STRATEGIES:

- ROLLING ROADBLOCK
- LANE SHIFTS OR CLOSURES
- SHOULDER CLOSURES
- RAMP CLOSURES
- NIGHT WORK
- WORK HOUR RESTRICTIONS FOR PEAK TRAVEL
- OFF-SITE DETOURS / USE OF ALTERNATIVE ROUTES

GENERAL NOTES / LOCAL NOTES

CHANGES MAY BE REQUIRED WHEN PHYSICAL DIMENSIONS IN THE DETAIL DRAWINGS, STANDARD DETAILS, AND ROADWAY DETAILS ARE NOT ATTAINABLE TO MEET FIELD CONDITIONS OR RESULT IN DUPLICATE OR UNDESIRED OVERLAPPING OF DEVICES. MODIFICATION MAY INCLUDE: MOVING, SUPPLEMENTING, COVERING, OR REMOVAL OF DEVICES AS DIRECTED BY THE ENGINEER.

THE FOLLOWING GENERAL NOTES APPLY AT ALL TIMES FOR THE DURATION OF THE CONSTRUCTION PROJECT EXCEPT WHEN OTHERWISE NOTED IN THE PLAN OR DIRECTED BY THE ENGINEER.

TIME RESTRICTIONS

A) DO NOT CLOSE OR NARROW TRAVEL LANES AS FOLLOWS:

ROAD NAME	DAY AND TIME RESTRICTIONS
US 19-23	MONDAY - SUNDAY 6:00 AM - 7:00 PM

B) DO NOT CLOSE OR NARROW TRAVEL LANES DURING HOLIDAYS AND SPECIAL EVENTS AS FOLLOWS:

ROAD NAME

US 19-23

HOLIDAY

1. FOR ANY UNEXPECTED OCCURRENCE THAT CREATES UNUSUALLY HIGH TRAFFIC VOLUMES, AS DIRECTED BY THE ENGINEER.
2. FOR NEW YEAR'S, BETWEEN THE HOURS OF 6:00 AM DECEMBER 31st TO 7:00 PM JANUARY 2ND. IF NEW YEAR'S DAY IS ON A FRIDAY, SATURDAY, SUNDAY, OR MONDAY THEN UNTIL 7:00 PM THE FOLLOWING TUESDAY.
3. FOR EASTER, BETWEEN THE HOURS OF 6:00 AM THURSDAY AND 7:00 PM MONDAY.
4. FOR MEMORIAL DAY, BETWEEN THE HOURS OF 6:00 AM FRIDAY TO 7:00 PM TUESDAY.
5. FOR INDEPENDENCE DAY, BETWEEN THE HOURS OF 6:00 A.M. THE DAY BEFORE INDEPENDENCE DAY AND 7:00 P.M. THE DAY AFTER INDEPENDENCE DAY.

IF INDEPENDENCE DAY IS ON A FRIDAY, SATURDAY, SUNDAY OR MONDAY THEN BETWEEN THE HOURS OF 6:00 A.M. THE THURSDAY BEFORE INDEPENDENCE DAY AND 7:00 P.M. THE TUESDAY AFTER INDEPENDENCE DAY.

6. FOR LABOR DAY, BETWEEN THE HOURS OF 6:00 A.M. FRIDAY AND 7:00 P.M. TUESDAY.

7. FOR THANKSGIVING DAY, BETWEEN THE HOURS OF 6:00 TUESDAY TO 7:00 P.M. MONDAY.
8. FOR CHRISTMAS, BETWEEN THE HOURS OF 6:00 AM THE FRIDAY BEFORE THE WEEK OF CHRISTMAS DAY AND 7:00 PM THE FOLLOWING TUESDAY AFTER THE WEEK OF CHRISTMAS.

C) DO NOT CLOSE ROADS AS FOLLOWS:

ROAD NAME	DAY AND TIME RESTRICTIONS
US 19-23 RAMP	MONDAY - SUNDAY 6:00 AM - 7:00 PM

D) DO NOT CONDUCT ANY HAULING OPERATIONS AGAINST THE FLOW OF TRAFFIC OF AN OPEN TRAVELWAY UNLESS THE HAULING OPERATION IS PROTECTED BY BARRIER OR GUARDRAIL OR AS DIRECTED BY THE ENGINEER.

LANE AND SHOULDER CLOSURE REQUIREMENTS

- E) REMOVE LANE CLOSURE DEVICES FROM THE LANE WHEN WORK IS NOT BEING PERFORMED BEHIND THE LANE CLOSURE OR WHEN A LANE CLOSURE IS NO LONGER NEEDED OR AS DIRECTED BY THE ENGINEER.
- F) WHEN PERSONNEL AND/OR EQUIPMENT ARE WORKING WITHIN 15 FT OF AN OPEN TRAVEL LANE, CLOSE THE NEAREST OPEN SHOULDER USING ROADWAY STANDARD DRAWING NO. 1101.04 UNLESS THE WORK AREA IS PROTECTED BY BARRIER OR GUARDRAIL OR A LANE CLOSURE IS INSTALLED.

G) WHEN PERSONNEL AND/OR EQUIPMENT ARE WORKING ON THE SHOULDER ADJACENT TO AN UNDIVIDED FACILITY AND WITHIN 5 FT OF AN OPEN TRAVEL LANE, CLOSE THE NEAREST OPEN TRAVEL LANE USING ROADWAY STANDARD DRAWING NO. 1101.02 UNLESS THE WORK AREA IS PROTECTED BY BARRIER OR GUARDRAIL.

WHEN PERSONNEL AND/OR EQUIPMENT ARE WORKING ON THE SHOULDER ADJACENT TO A DIVIDED FACILITY AND WITHIN 10 FT OF AN OPEN TRAVEL LANE, CLOSE THE NEAREST OPEN TRAVEL LANE USING ROADWAY STANDARD DRAWING NO. 1101.02 UNLESS THE WORK AREA IS PROTECTED BY BARRIER OR GUARDRAIL.

H) WHEN PERSONNEL AND/OR EQUIPMENT ARE WORKING WITHIN A LANE OF TRAVEL OF AN UNDIVIDED OR DIVIDED FACILITY, CLOSE THE LANE ACCORDING TO THE TRAFFIC CONTROL PLANS, ROADWAY STANDARD DRAWINGS, OR AS DIRECTED BY THE ENGINEER. CONDUCT THE WORK SO THAT ALL PERSONNEL AND/OR EQUIPMENT REMAIN WITHIN THE CLOSED TRAVEL LANE.

I) DO NOT WORK SIMULTANEOUSLY WITHIN 15 FT ON BOTH SIDES OF AN OPEN TRAVELWAY, RAMP, OR LOOP WITHIN THE SAME LOCATION UNLESS PROTECTED WITH GUARDRAIL OR BARRIER.

J) DO NOT INSTALL MORE THAN ONE LANE CLOSURE IN ANY ONE DIRECTION ON US 19-23.

PAVEMENT EDGE DROP OFF REQUIREMENTS

K) BACKFILL AT A 6:1 SLOPE UP TO THE EDGE AND ELEVATION OF EXISTING PAVEMENT IN AREAS ADJACENT TO AN OPENED TRAVEL LANE THAT HAS AN EDGE OF PAVEMENT DROP-OFF AS FOLLOWS:

BACKFILL DROP-OFFS THAT EXCEED 2 INCHES ON ROADWAYS WITH POSTED SPEED LIMITS OF 45 MPH OR GREATER.

BACKFILL DROP-OFFS THAT EXCEED 3 INCHES ON ROADWAYS WITH POSTED SPEED LIMITS LESS THAN 45 MPH.

BACKFILL WITH SUITABLE COMPACTED MATERIAL, AS APPROVED BY THE ENGINEER, AT NO EXPENSE TO THE DEPARTMENT.

L) DO NOT EXCEED A DIFFERENCE OF 2 INCHES IN ELEVATION BETWEEN OPEN LANES OF TRAFFIC FOR NOMINAL LIFTS OF 1.5 INCHES. INSTALL ADVANCE WARNING "UNEVEN LANES" SIGNS (W8-11) 500 FT IN ADVANCE AND A MINIMUM OF EVERY HALF MILE THROUGHOUT THE UNEVEN AREA.

TRAFFIC PATTERN ALTERATIONS

M) NOTIFY THE ENGINEER THIRTY (30) CALENDAR DAYS PRIOR TO ANY TRAFFIC PATTERN ALTERATION.

SIGNING

N) INSTALL ADVANCE WORK ZONE WARNING SIGNS WHEN WORK IS WITHIN 40 FT FROM THE EDGE OF TRAVEL LANE AND NO MORE THAN THREE (3) DAYS PRIOR TO THE BEGINNING OF CONSTRUCTION.

O) PROVIDE SIGNING AND DEVICES REQUIRED TO CLOSE THE ROAD ACCORDING TO THE ROADWAY STANDARD DRAWINGS AND TRAFFIC CONTROL PLANS.

PROVIDE SIGNING REQUIRED FOR THE OFF-SITE DETOUR ROUTE AS SHOWN IN THE TRAFFIC CONTROL PLANS.

P) COVER OR REMOVE ALL SIGNS AND DEVICES REQUIRED TO CLOSE THE ROAD WHEN ROAD CLOSURE IS NOT IN OPERATION.

COVER OR REMOVE ALL SIGNS REQUIRED FOR THE OFF-SITE DETOUR WHEN THE DETOUR IS NOT IN OPERATION.

Q) ENSURE ALL NECESSARY SIGNING IS IN PLACE PRIOR TO ALTERING ANY TRAFFIC PATTERN.

TRAFFIC CONTROL DEVICES

R) WHEN LANE CLOSURES ARE NOT IN EFFECT SPACE CHANNELIZING DEVICES IN WORK AREAS NO GREATER IN FEET THAN TWICE THE POSTED SPEED LIMIT (MPH) EXCEPT, 10 FT ON-CENTER IN RADII, AND 3 FT OFF THE EDGE OF AN OPEN TRAVELWAY. REFER TO STANDARD SPECIFICATIONS FOR ROADS AND STRUCTURES SECTIONS 1130 (DRUMS), 1135 (CONES) AND 1180 (SKINNY DRUMS) FOR ADDITIONAL REQUIREMENTS.

S) PLACE TYPE III BARRICADES, WITH "ROAD CLOSED" SIGN R11-2 ATTACHED, OF SUFFICIENT LENGTH TO CLOSE ENTIRE ROADWAY.

PAVEMENT MARKINGS AND MARKERS

T) TIE PROPOSED PAVEMENT MARKING LINES TO EXISTING PAVEMENT MARKING LINES.

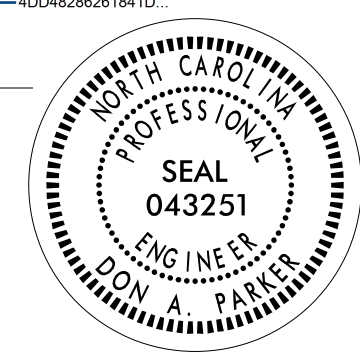

U) REMOVE/REPLACE ANY CONFLICTING/DAMAGED PAVEMENT MARKINGS AND MARKERS BY THE END OF EACH DAY'S OPERATION.

MISCELLANEOUS

V) LAW ENFORCEMENT MAY BE USED TO MAINTAIN TRAFFIC THROUGH THE WORK AREA AND/OR INTERSECTIONS AS DIRECTED BY THE ENGINEER.

PROJ. REFERENCE NO. 13BPR.3.3	SHEET NO. TMP-1B
----------------------------------	---------------------

6/17/2021 \\dot\dfsroot\0\Groups\WZTCCC\TMU\WZTC\DesignGroup3\Projects\3BPR.3.3\3BPR.3.3.TC.TMP.01B.dgn User:smackillu

<p>APPROVED: _____</p> <p>DATE: 6/17/2021</p> <p style="text-align: right; font-size: small;">DocuSigned by: Don A. Parker 40046260218410</p> 		<h2 style="margin: 0;">TRANSPORTATION OPERATIONS PLAN</h2>
DOCUMENT NOT CONSIDERED FINAL UNLESS ALL SIGNATURES COMPLETED		

TEMPORARY TRAFFIC CONTROL NARRATIVE

BEFORE BEGINNING WORK AT ANY BRIDGE LOCATION, THE CONTRACTOR SHALL SUBMIT A WRITTEN CONSTRUCTION SEQUENCE FOR TRAFFIC CONTROL AND CONSTRUCTION LIGHTING. THE SEQUENCE MUST BE APPROVED BEFORE CLOSING A LANE OF TRAFFIC.

THE CONTRACTOR SHALL OBTAIN WRITTEN APPROVAL FROM THE ENGINEER BEFORE WORKING IN MORE THAN ONE BRIDGE LOCATION SIMULTANEOUSLY.

REFER TO INTERMEDIATE CONTRACT TIMES AND LIQUIDATED DAMAGES FOR LANE AND/OR RAMP CLOSURE OPERATIONS.

PRIOR TO BEGINNING WORK, INSTALL ADVANCE WARNING SIGNS IN ACCORDANCE WITH RSD 1101.01.

TEMPORARY TRAFFIC CONTROL NARRATIVE FOR BRIDGES 284, 302 AND 303

1. USING RSD 1101.02, SHEET 3, UTILIZE TEMPORARY LANE CLOSURES TO COMPLETE THE BRIDGE PRESERVATION PER THE STRUCTURES PLANS. REFER TO TMP-3 FOR STAGE I AND STAGE II TRAFFIC OPERATIONS.

2. REMOVE ALL TRAFFIC CONTROL DEVICES.

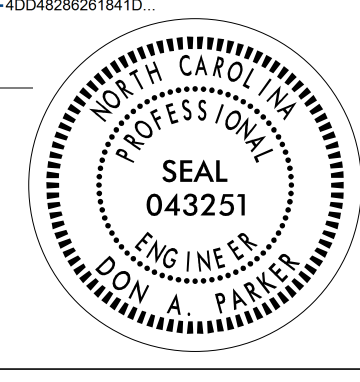

TEMPORARY TRAFFIC CONTROL NARRATIVE FOR BRIDGE 289

1. USING RSD 1101.02, SHEET 3, UTILIZE TEMPORARY LANE CLOSURES TO COMPLETE THE BRIDGE PRESERVATION PER THE STRUCTURES PLANS. REFER TO TMP-3 FOR STAGE I AND STAGE II TRAFFIC OPERATIONS.

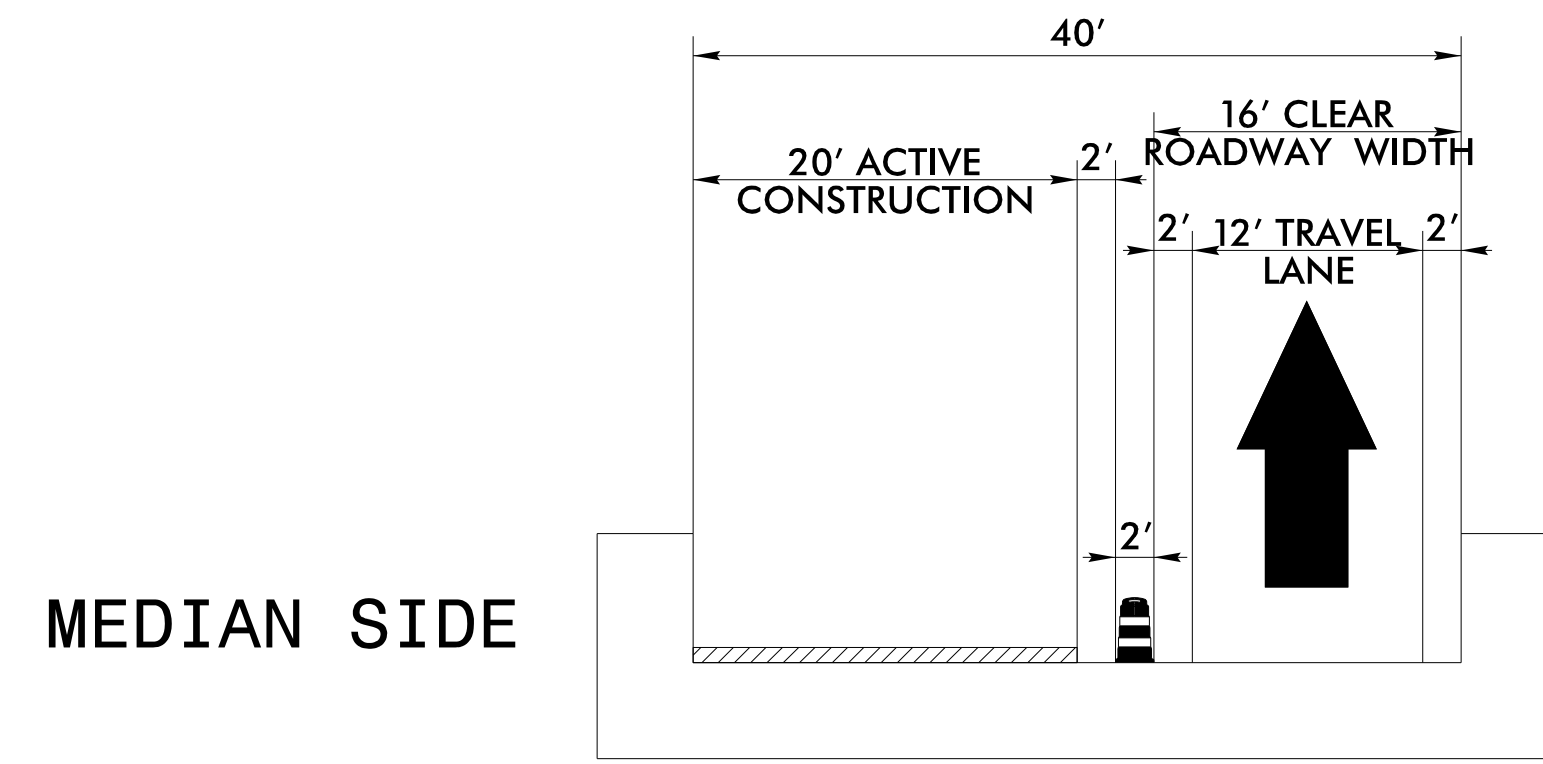
A. CLOSE US-19/23 ON-RAMP FROM SR 1781 (BROADWAY STREET) DURING MAINLINE LANE CLOSURE OPERATIONS. REFER TO TMP-4 FOR ADDITIONAL DETAILS AND SIGN LOCATIONS FOR THE OFFSITE DETOUR.

2. REMOVE ALL TRAFFIC CONTROL DEVICES.

6/17/2021
 \\dot\dfsroot\Groups-WZTCCC\TMU\WZTC\DesignGroup3\Projects\13BPR.3.3\13BPR.3.3.TC-TMP_02.dgn
 User:mackillu

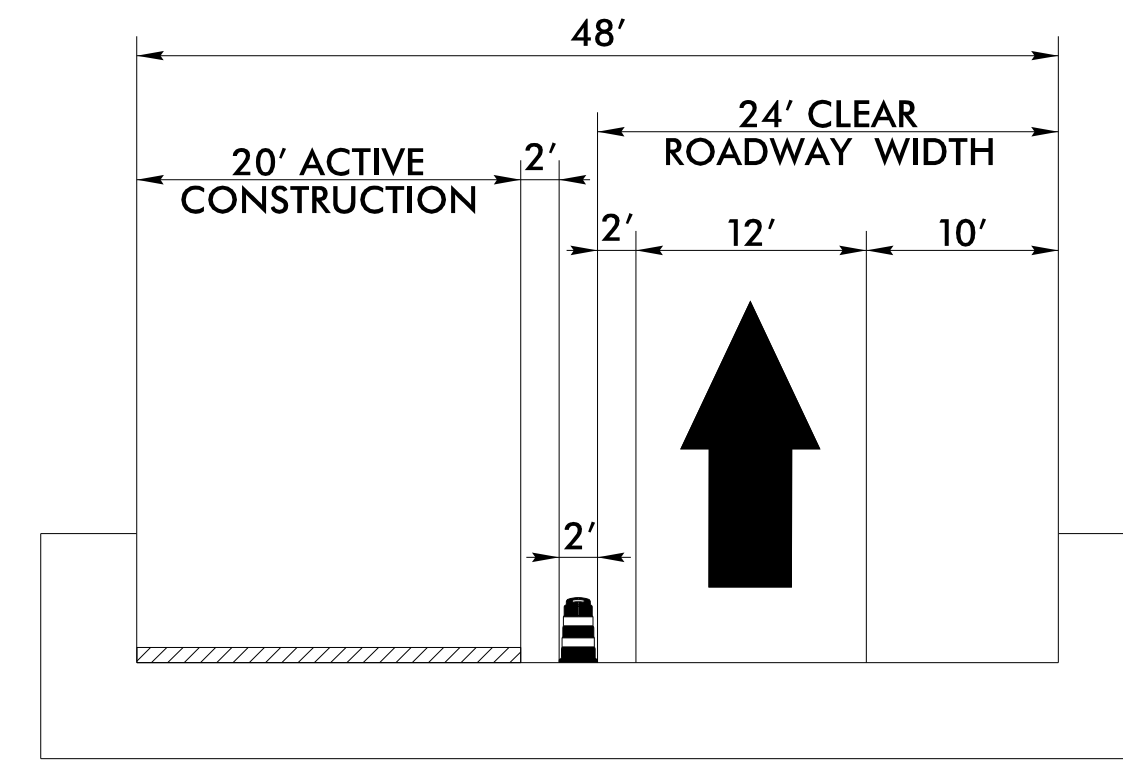
APPROVED: Don A. Parker 100492802818410 DATE: 6/17/2021			<h3 style="margin: 0;">TEMPORARY TRAFFIC CONTROL NARRATIVE</h3>
DOCUMENT NOT CONSIDERED FINAL UNLESS ALL SIGNATURES COMPLETED			

TYPICAL SECTION FOR BRIDGE WORK



MEDIAN SIDE

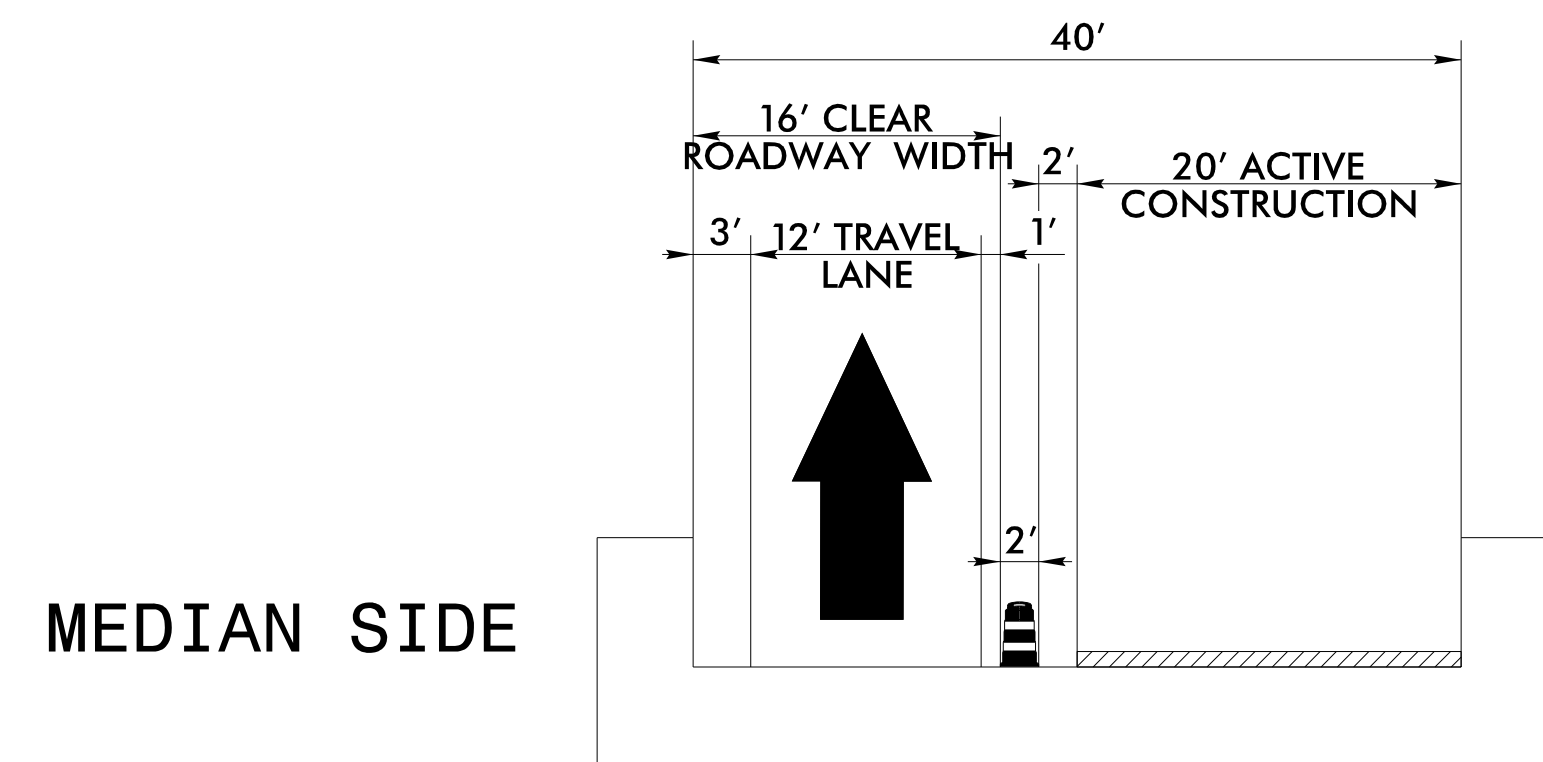
BRIDGES 284, 302, 303
STAGE I CONSTRUCTION



MEDIAN SIDE

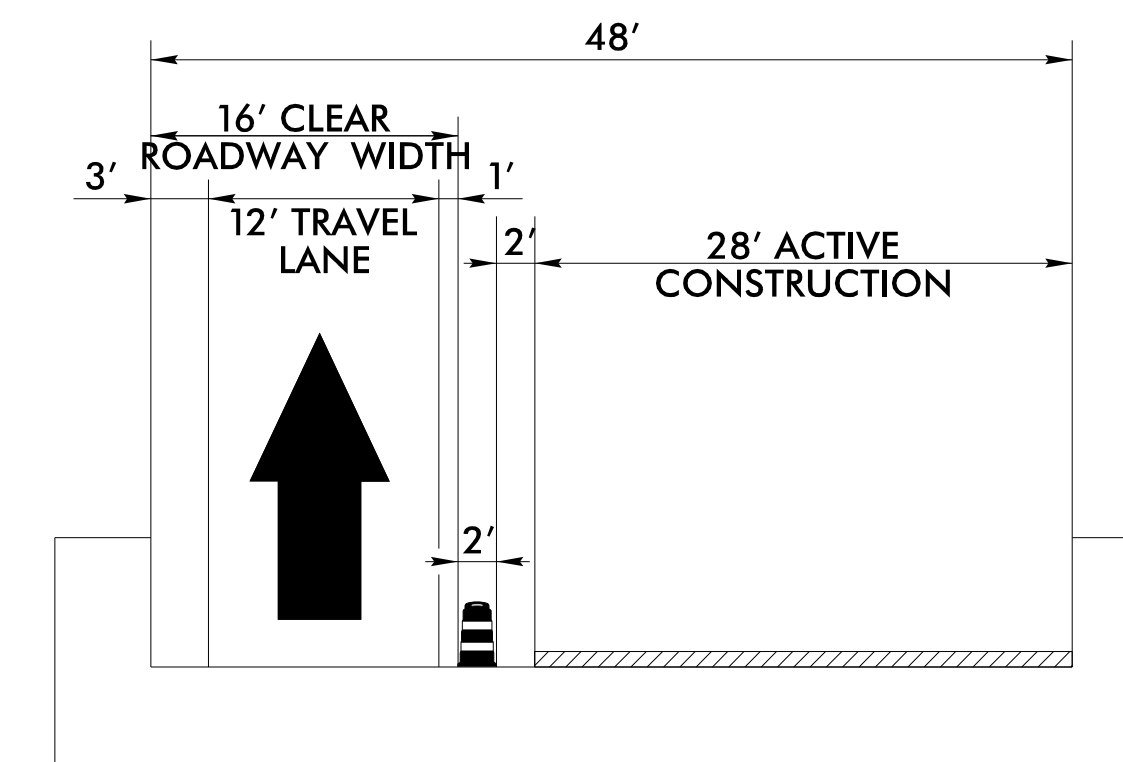
BRIDGE 289
STAGE I CONSTRUCTION

TYPICAL SECTION FOR BRIDGE WORK



MEDIAN SIDE

BRIDGES 284, 302, 303
STAGE II CONSTRUCTION



MEDIAN SIDE

BRIDGE 289
STAGE II CONSTRUCTION

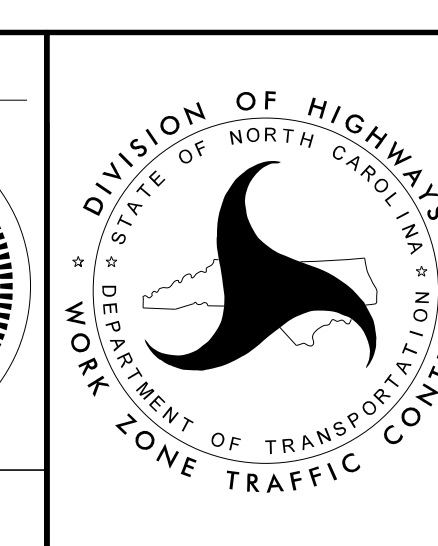
SEE ALSO STRUCTURE PLANS.

APPROVED: _____
DATE: 6/17/2021

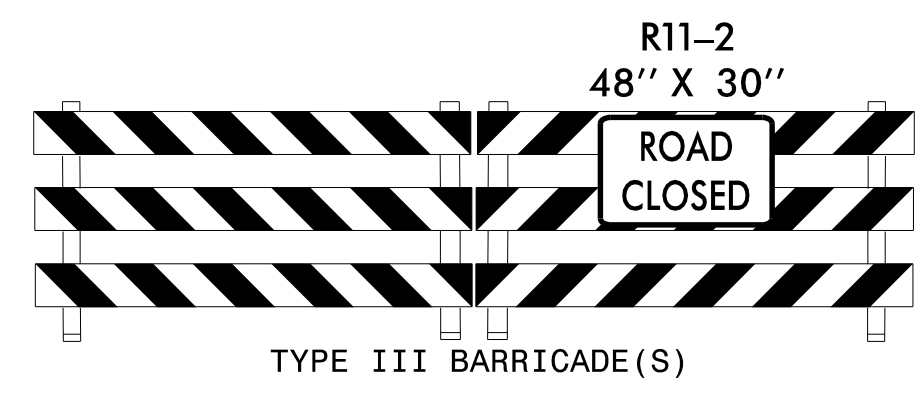
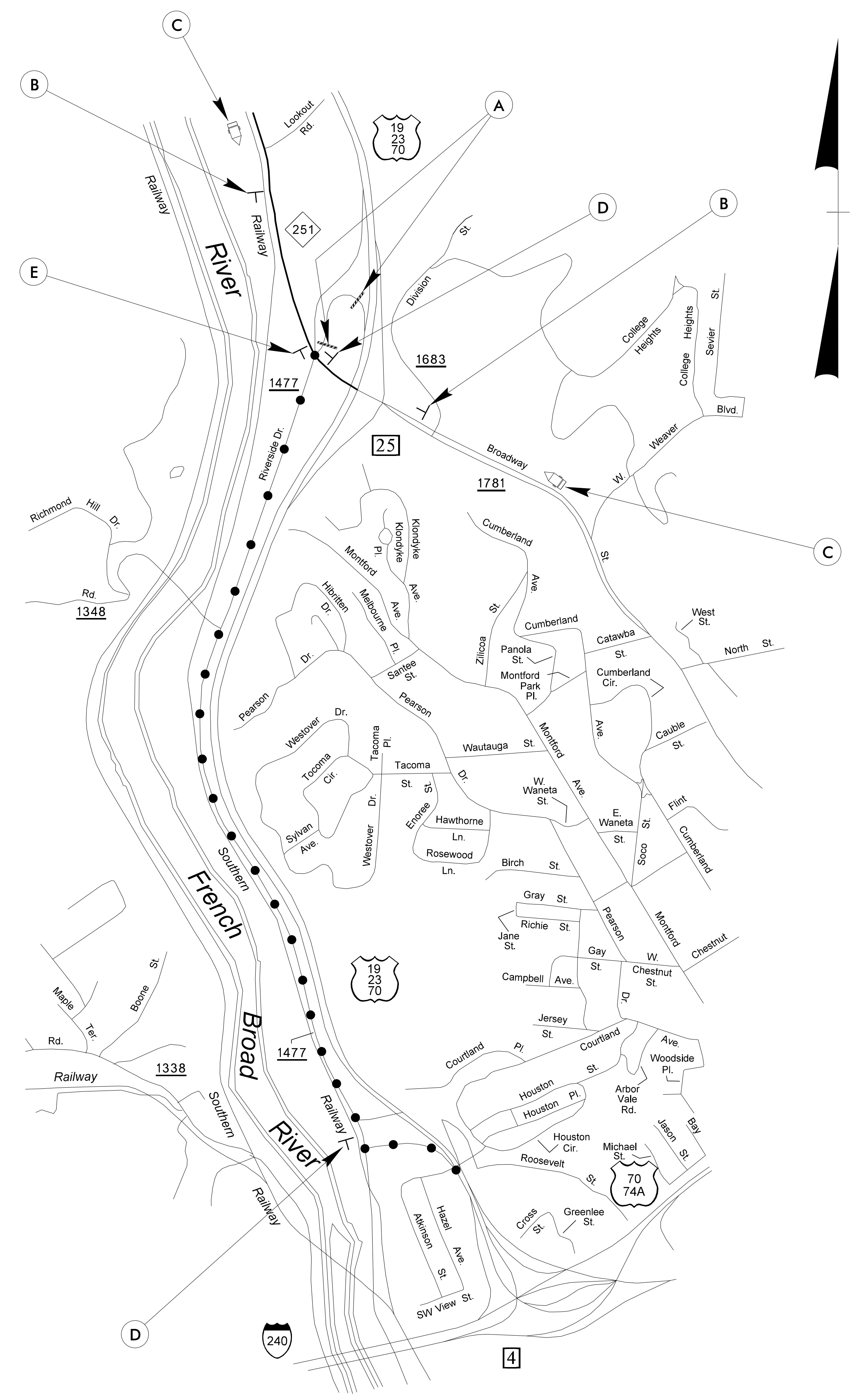
DocuSigned by:
Don A. Parker
400462602610410...

SEAL
043251
DON A. PARKER
ENGINEER

DOCUMENT NOT CONSIDERED FINAL
UNLESS ALL SIGNATURES COMPLETED



BRIDGE
CROSS SECTIONS

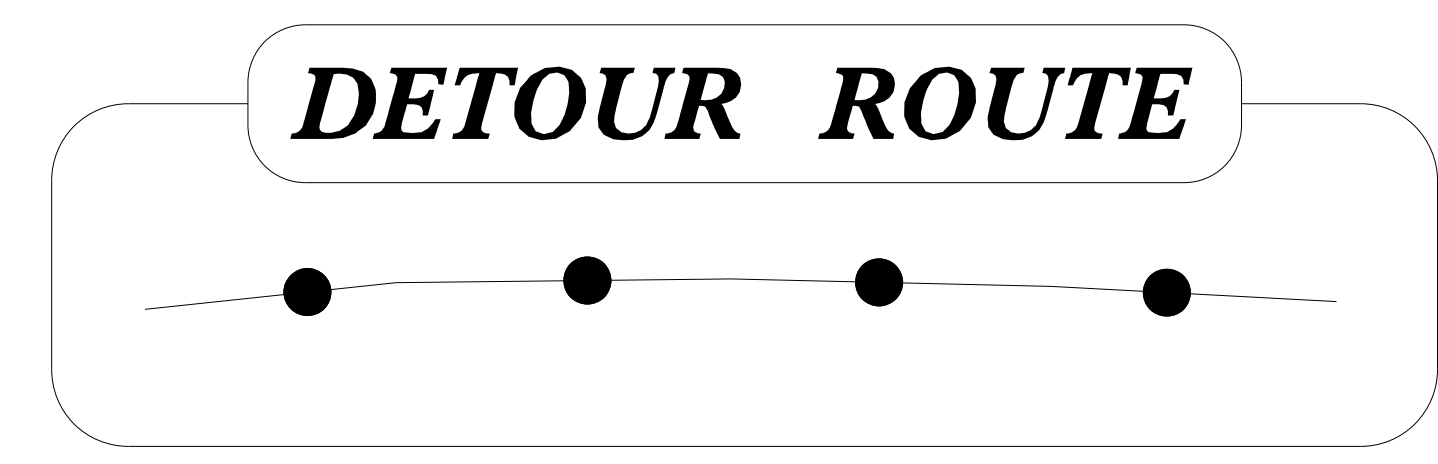
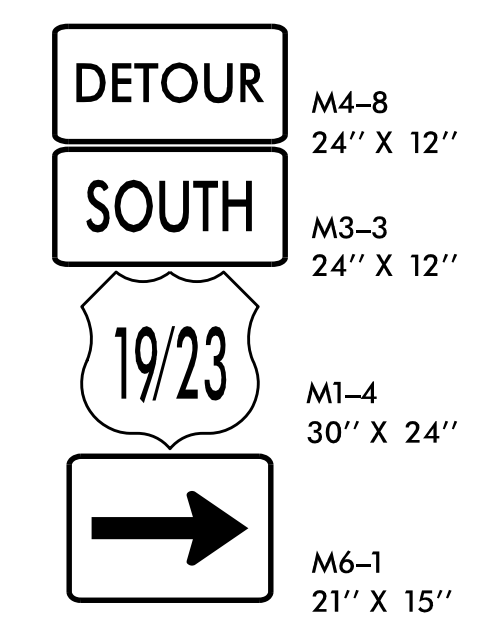
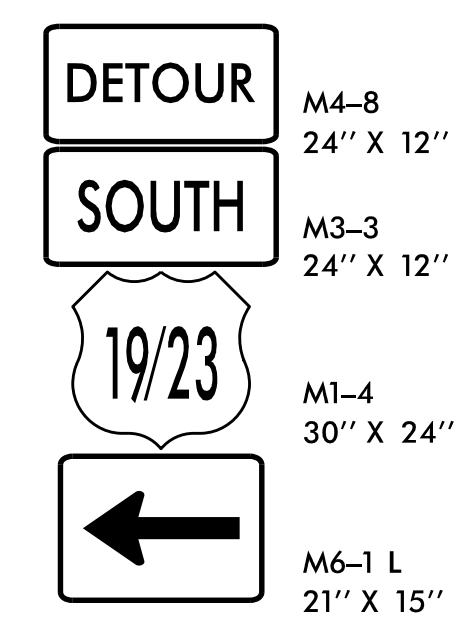


NO ACCESS TO
US 19/23 SOUTH
FOLLOW DETOUR

PROVIDED BY DIV 13
78'' X 60''

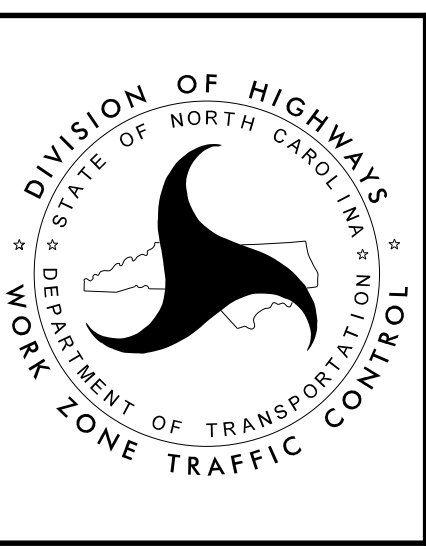
MESSAGE NO. 1	MESSAGE NO. 2
19/23 S ON-RAMP CLOSED	USE DETOUR

CHANGEABLE MESSAGE SIGN



APPROVED: Don A. Parkes
DATE: 6/17/2021

DOCUMENT NOT CONSIDERED FINAL
UNLESS ALL SIGNATURES COMPLETED



BRIDGE 289
ON-LOOP
OFFSITE DETOUR

6/17/2021
\\dot\dfs\root\Groups\WZTCCC\TMU\WZTC\DesignGroup3\Projects\13BPR.3.3\13BPR.3.3.TC.TMP_04.dgn
User:smackillu